

PRUEBA 1



TEORÍA

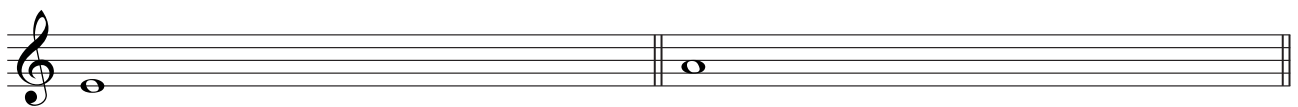
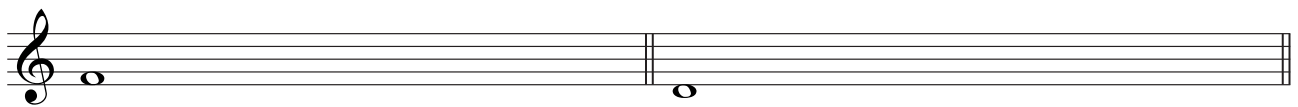
1. Escribe número y especie de los siguientes intervallos



2. Escribe la inversión de los intervallos del ejercicio 1, indicando, también el número y especie que resulte.



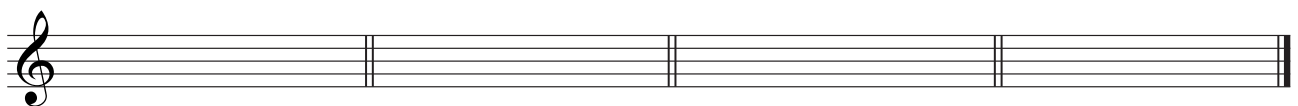
3. Escribe las escalas diatónicas mayores, partiendo de las notas que están escritas



4. Escribe las siguientes armaduras



5. Escribe la nota sensible de las tonalidades del ejercicio anterior.



RITMO

The musical score for 'RITMO' consists of five staves. The first staff is in 2/4 time with a tempo marking of ♩ = 52. It features a melody with eighth and sixteenth notes, including a triplet of eighth notes. The second staff continues the melody, marked with a 6-measure rest and a triplet of eighth notes, and includes a key signature change to 6/8. The third staff is in bass clef, showing a bass line with eighth and sixteenth notes, including a 2-measure rest. The fourth staff continues the bass line with a 4-measure rest. The fifth staff concludes the piece with a final triplet of eighth notes.

LECTURA DE CLAVES

The musical score for 'LECTURA DE CLAVES' is a single staff in bass clef. It begins in 3/4 time and changes to 3/8 time. The melody consists of eighth and sixteenth notes, ending with a triplet of eighth notes.

ENTONACIÓN

Andantino ♩ = 68

mf *P* *mf súbito*

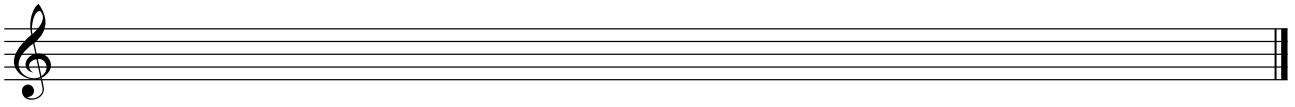
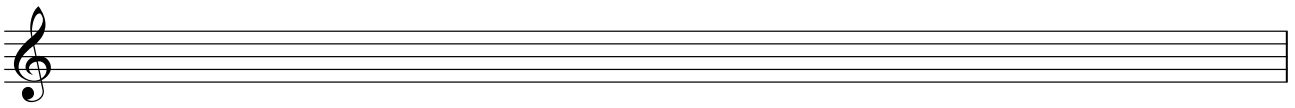
F *P*

mf *dim e rit...*

mf *dim e rit...*

DICTADOS MUSICALES

Número 1



Número 2

